

JAGEMANN™ 42 Polymer Magazine

Jagemann™ is proud to introduce a new line of polymer magazines to the market. Our customers have asked for it and we have responded with a line of products that will satisfy pro-shooters as well as sports enthusiasts.

All of our magazines are easy to use and sized to operate right out of the box. Leveraging Jagemann's experience and years of servicing the automotive market, quality is a priority and manufacturing processes are designed for quality, reliable end products.



Decades of Quality.

Jagemann™ has been serving the automotive market since 1946. Demanding tight tolerances and consistent quality, the auto companies have depended on Jagemann to deliver quality products and exceeded expectations.

Jagemann™ is proud to be a privately-held U.S. manufacturer of polymer magazines and premium brass casings for rifles and pistols and we apply over sixty years of expertise in the metal stamping industry towards the manufacturing of top-of-the-line casings. In striving for the highest of precision, we maintain complete quality control over the manufacturing process.

Features and Benefits:

Ease of Disassembly

Improved speed of cleaning while making the task easier

Extended Base Pad

Quicker and more responsive loading

Improved follower geometry and round staking

Eliminates jamming and short feeding

Optimized spring power

Dependable feeding without stalling slide

Polymer material

Doesn't scratch/scrape on anodized and coated 42 frames

Reinforced automotive-grade engineered resin

Increased strength and stability

Revamped feed lip geometry

More time-efficient and reliable feeding

Self-lubrication

Consistent performance over time

Tighter Tolerances

Increased durability and improves magazine life

Usability

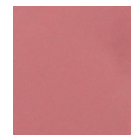
Easy to use and sized to operate right out of the box



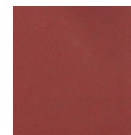
Available Colors:



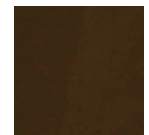
Tiffany Blue
PMS 319



Pink
PMS 1915



Red
PMS 187



Brown
PMS 2322



Green
PMS 448



Grey
PMS 11

JAGEMANN
SPORTING GROUP